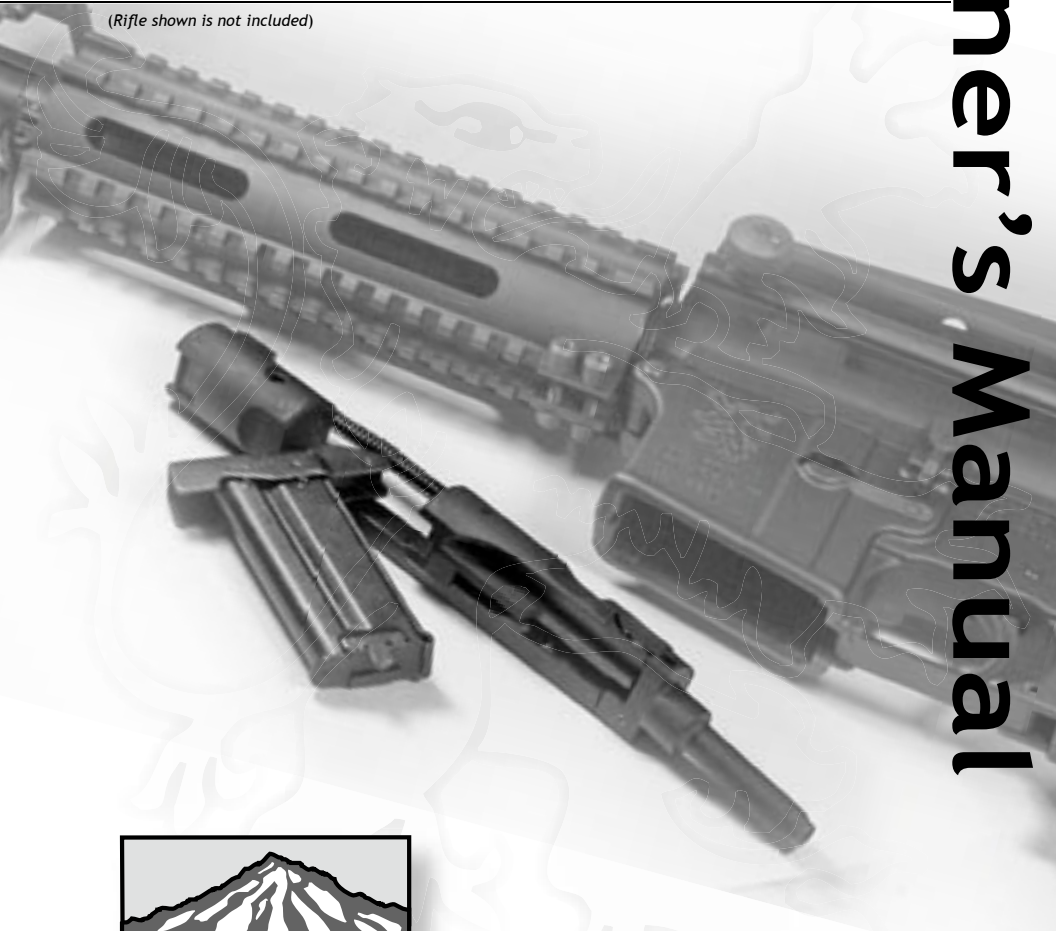


Olympic Arms **RFA** .22 Rimfire Adapter

Owner's Manual

(Rifle shown is not included)



624 Old Pacific Hwy SE
Olympia, WA 98513

• • • • •

Tel (800) 228 - 3471
Fax (360) 491 - 3447

Warnings / Steps For Use

Before Use Do not attempt to use the RFA conversion system or use any of its components until you have read and fully understand this owner's manual. This owner's manual is provided to assist with safe performance and enjoyment of your RFA conversion system. If there is anything in this manual that you do not understand, or if you have any questions about the safe operation of your new RFA conversion system, please call our **Customer Service Team at (360) 456 - 3471** *before you attempt to use your RFA conversion system.*

Steps For Use There are several steps to installing the RFA conversion system before it can be used:

- The RFA bolt group assembly must be installed into the upper receiver.
- The magazine adapter insert must be installed into a standard magazine.
- The magazine adapter insert must be loaded with proper ammunition
- The outer magazine, with insert installed, must be loaded into the rifle.

Only after each of the steps listed above have been properly completed will the RFA conversion system be ready to use.

Ammunition The RFA conversion system is designed for use with only .22 LR (Long Rifle) ammunition. Use of any other type of ammunition will void your warranty and could create safety hazards.

Warning *When the RFA bolt group is not being used with the rifle, NEVER retract the bolt and position/load ammunition into the barrel guide. If the bolt is released the ammunition could discharge thus causing damage to the RFA bolt group and/or cause other property damage and/or injury and/or death to people.*

Basic NRA rules for safe gun handling: (1) Always keep the gun pointed in a safe direction. (2) Always keep your fingers off the trigger until ready to discharge the gun. (3) Always keep the gun unloaded until ready to use. (4) Always treat your gun as if it were loaded and ready to discharge.

About the RFA conversion system: The RFA is a conversion system, which allows the use of .22LR ammunition in a standard AR rifle fitted with a .223 or 5.56 NATO barrel. This conversion system is based around the bolt group assembly and a magazine adapter insert. The RFA system was designed to be cost effective, simply to use, and easy to enjoy. Using the RFA conversion system in a manner not described in this owner's manual may: void your warranty, cause damage to your rifle and/or RFA components; cause other property damage, cause injury or death to yourself or other people.

Components / Safety

The RFA conversion system includes a uniquely designed bolt group assembly and a magazine adapter insert.



Clearing The Rifle Always make sure to clear the rifle whenever the rifle is not in immediate use.

- Put the safety on.
- Point the rifle in a safe direction and remove the magazine. The magazine is removed by operating the magazine release button on the lower receiver and pulling the magazine down and out of the magazine well.
- Pull the charging handle back to its full extent and remove any ammunition that may be inside the chamber.
- With the charging handle still pulled back, visually inspect the chamber to ensure that the rifle is not loaded with any ammunition.

Maintenance The RFA conversion system features a low maintenance schedule. We recommend periodic inspection of the bolt group assembly components for wear and damage. Olympic Arms cannot specify an exact inspection process or schedule because variations in usage have various effects on the RFA bolt group components.

The bolt group assembly for the RFA should be cleaned regularly as with all other major components of an AR rifle. Olympic Arms does not recommend any particular type of cleaner for the RFA conversion system, however, we do suggest using the same methods to clean the RFA bolt group assembly as you would the normal bolt group assembly that came with the rifle.

Accuracy The RFA is a unique conversion system which uses modified forms of basic AR rifle components to allow the use of alternate caliber ammunition in an AR rifle. The compromise in a basic system such as the RFA is a loss of accuracy when shooting. If you desire accuracy and the option for alternate calibers in the same rifle, we recommend you take a look at our 22-17 Partner conversion system. The Partner system is an upper receiver and barrel system which allows the use of .22LR or .17MK2 caliber ammunition in your AR rifle.

Installing The Magazine Insert

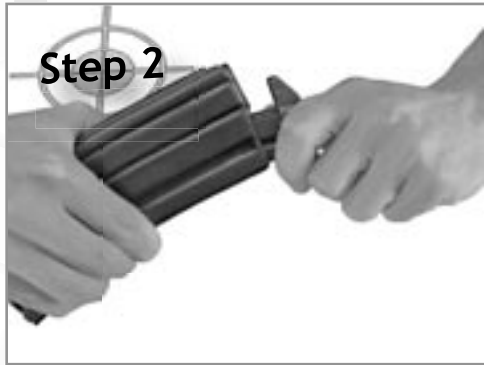
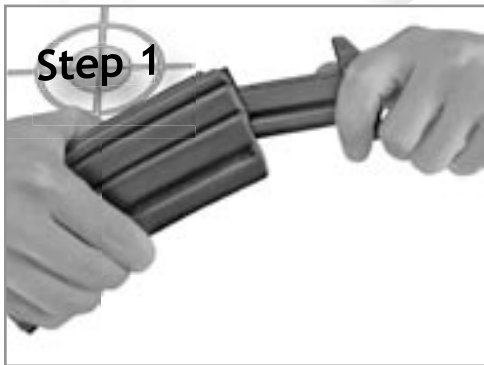
The magazine adapter insert is designed to install into a standard AR (20) or (30) round magazine.

Position and depress the magazine adapter insert into the magazine (see photos 1 & 2). Next, tilt the magazine adapter insert on angle. Hook the head of the magazine adapter insert

under the magazine lips of the outer magazine (see photo 3). Finally slide the magazine adapter insert all of the way into the outer magazine (see photo 4).



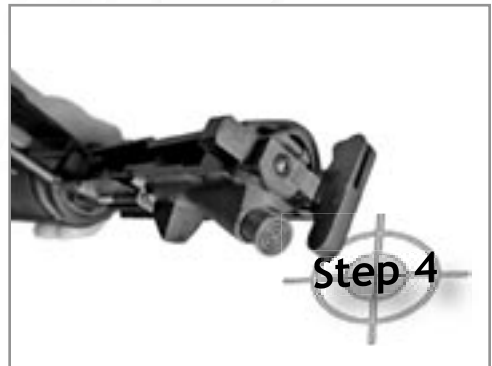
For safety, it is recommended that the magazine adapter insert be installed into the outer magazine before it is loaded with ammunition. The magazine adapter insert has a maximum capacity of 10 rounds and is loaded in a standard fashion. Insert one round at a time. Each round should be loaded rim first.



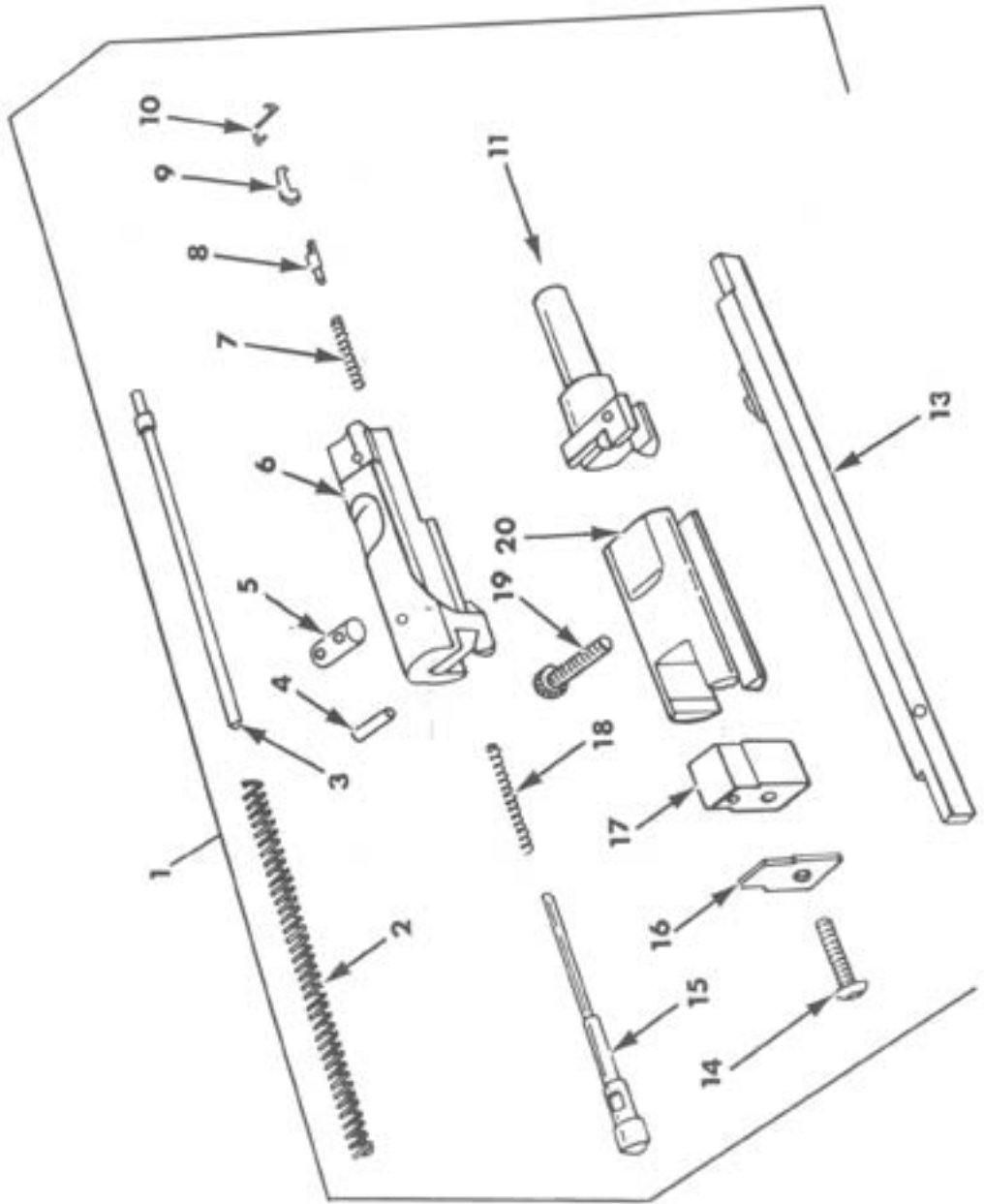
Installing The RFA Bolt Group

The RFA bolt group assembly is designed to fit in a standard mil-spec AR upper receiver in place of the bolt group assembly that came with your upper receiver. Follow the steps below to properly install the RFA bolt group assembly:

- Clear the rifle (see “*Clearing The Rifle*” on previous page).
- Open the rifle by pushing out the rear takedown pin and pivoting the receivers.
- Pull out the current bolt group assembly (see “*Step 1*” below).
- Insert the RFA bolt group assembly (see “*Step 2*” below).
- Pull the charging handle out about half way.
- Align the RFA bolt group assembly so that the guide rod and spring are directly underneath the charging handle (see “*Step 3*” below).
- Push the RFA bolt group assembly the rest of the way into the upper receiver.
- Push the charging handle the rest of the way into the upper receiver.
- Check that the RFA bolt group assembly is flush with the rear of the receiver (see “*Step 4*” below).
- Pivot the rifle to the closed position and lock the rear takedown pin shut.



Parts Schematic



Parts List

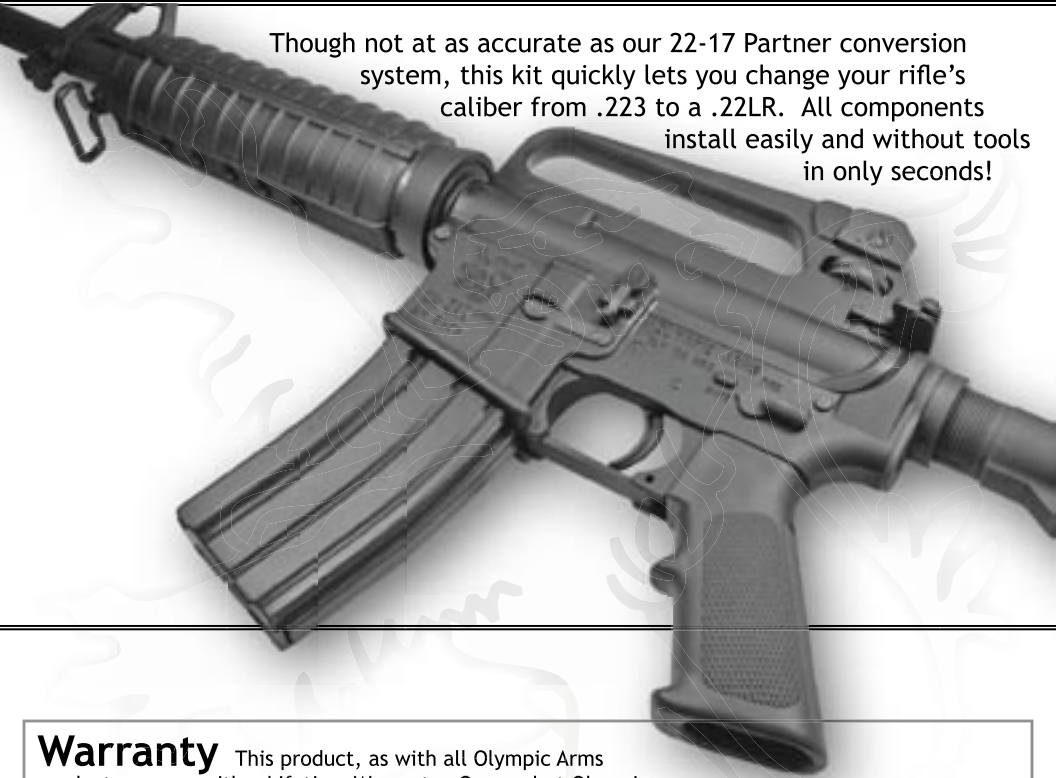
The indicated numbers on the schematic correspond to the last digits of the part number in the parts list.

Note: At the time this manual was printed, pricing for parts was not available. Please call our Customer Service Team to find out if prices are now available.

<u>Part</u>	<u>Description</u>	<u>Cost</u>
PTNR-1	Bolt Group Assembly	N/A
PTNR-2	Spring.....	N/A
PTNR-3	Pin, Straight	N/A
PTNR-4	Headless Pin, Straight.....	N/A
PTNR-5	Pin, Straight	N/A
PTNR-6	Bolt	N/A
PTNR-7	Extractor Spring	N/A
PTNR-8	Extractor Plunger.....	N/A
PTNR-9	Extractor	N/A
PTNR-10	Cartridge Retainer.....	N/A
PTNR-11	Barrel Liner.....	N/A
PTNR-12	N/A
PTNR-13	Rail Guide.....	N/A
PTNR-14	Position Spring Retaining Screw ..	N/A
PTNR-15	Firing Pin	N/A
PTNR-16	Position Spring	N/A
PTNR-17	Lug Support.....	N/A
PTNR-18	Firing Pin Spring	N/A
PTNR-19	Socket Head Cap Screw.....	N/A
PTNR-20	Support Rail	N/A

Please check our website or call our Customer Service Team for prices and availability of parts for the RFA conversion system.

www.olyarms.com



Though not as accurate as our 22-17 Partner conversion system, this kit quickly lets you change your rifle's caliber from .223 to a .22LR. All components install easily and without tools in only seconds!

Warranty

This product, as with all Olympic Arms products, comes with a Lifetime Warranty. Our goal at Olympic Arms is to lead the industry in customer service and satisfaction. For this reason, we are proud to offer the most comprehensive factory warranty of its kind. We will warranty all parts and products manufactured by Olympic Arms against any and all manufacturer's defects in materials and workmanship which affect the satisfactory operation of the item being warranted. This warranty is non-transferable.

Beyond warranty, we guarantee complete customer satisfaction. If you are not completely satisfied with the purchase of any Olympic Arms product for any reason, simply return it to us within sixty (60) days for a replacement, credit, or refund of the original purchase price (to be decided by Olympic Arms).

The liability of Olympic Arms is limited to repair or replacement of only those parts determined by our expert staff to be defective on the part of the factory. Olympic Arms assumes no liability for accidental or consequential damages.

This product, as with many other Olympic Arms products, can cause damage to itself, to other property; cause injury or death or its operator or other people. Use of the product demands responsibility and understanding with regard to guns and gun use. This product is not recommended for novice gun owners/operators who are unfamiliar with the operation of an AR rifle.

For more information and details on the Lifetime Warranty and Satisfaction Guarantee, please call our Customer Service Team at (360) 456 - 3474 or email info@olyarms.com.