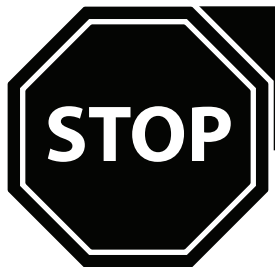


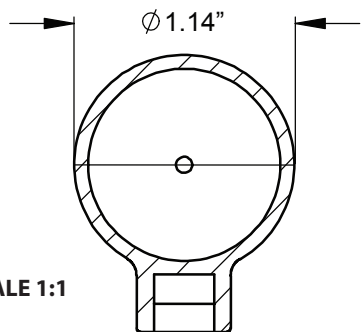
WARNING: Before beginning installation, make sure the weapon is unloaded and the safety engaged!



THERE ARE TWO TYPES OF CARBINE RECEIVER EXTENSIONS (BUFFER TUBES): MIL-SPEC, AND COMMERCIAL. BEFORE PROCEEDING, CONFIRM YOU HAVE THE CORRECT CTR FOR YOUR RECEIVER EXTENSION. INCORRECT INSTALLATION WILL RESULT IN DAMAGE TO YOUR STOCK AND/OR BUFFER TUBE! CONTACT 1.877.4MAGPUL FOR A REPLACEMENT IF NECESSARY.

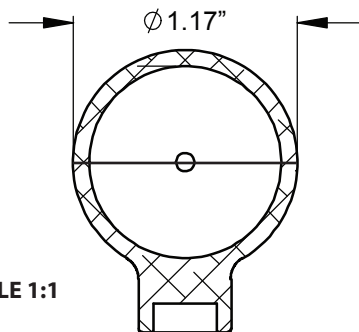
The easiest way to distinguish between mil-spec and commercial receiver extensions is to measure the tube diameter (see illustrations below). To determine if your CTR is the Commercial or Mil-Spec version, see bottom right illustration. The stock should slide easily over the receiver extension, but be snug enough for the friction lock to fully engage. Call 1.877.4MAGPUL if you are unsure of this installation.

1. MIL-SPEC TUBE CROSS SECTION:



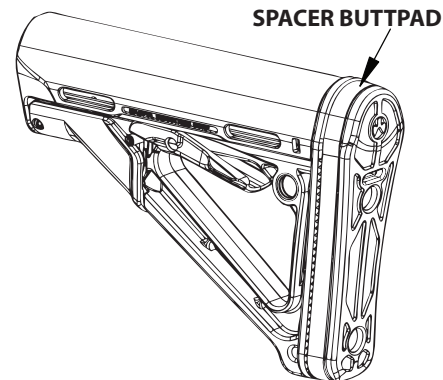
Mil-spec receiver extensions have a slightly smaller diameter of 1.146", and have a flat back. Both the correct Mil-Spec CTR and the Commercial CTR will fit over this tube, but the Commercial CTR will be loose.

2. COMMERCIAL TUBE CROSS SECTION:



Commercial receiver extensions have a slightly larger diameter of 1.170", and sometimes have slanted backs. Only the Commercial CTR will slide easily over this tube. **Do NOT force a Mil-Spec CTR over a commercial tube!**

COMMERCIAL CTR SPACER/PAD:



Most commercial tubes are longer than standard mil-spec tubes, and often have a slanted back. All Commercial CTR stocks come with a spacer butt pad installed, as this is required for use with most commercial tubes.

FOR MORE DETAILS ON RECEIVER EXTENSIONS, PLEASE SEE WWW.MAGPUL.COM/TECH.